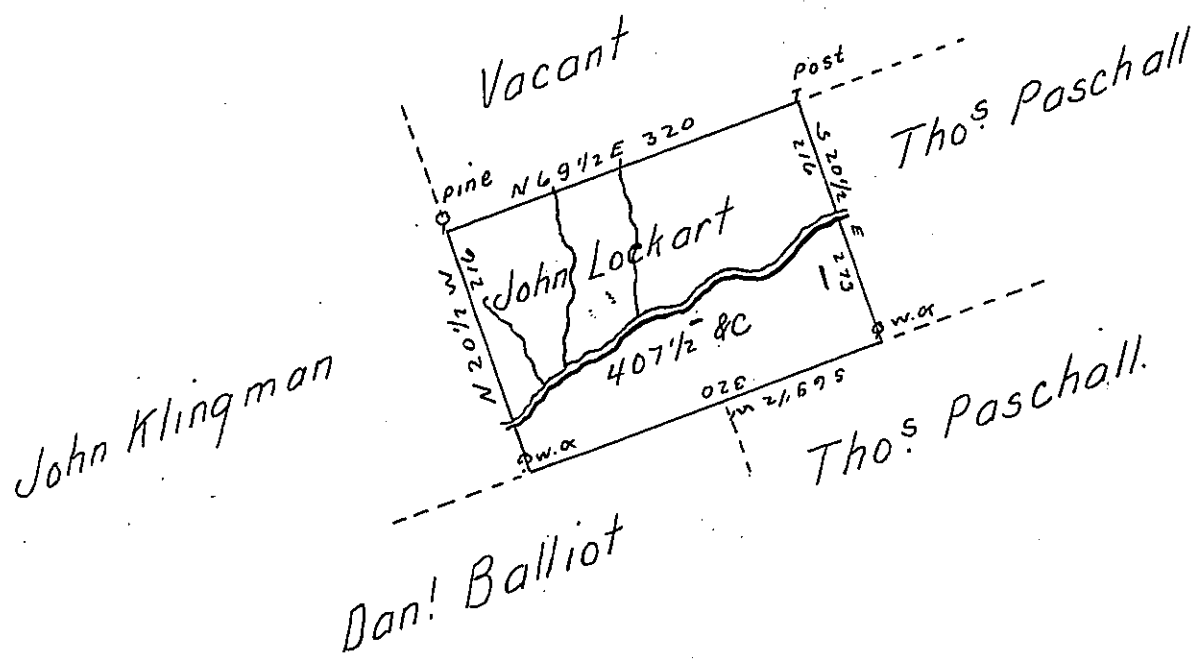


W



A Draft of a tract of land Called - Situate on a lower Wappalopen -  
 Adjoining Land of John Klingman and others in the County of  
 Luzerne. Containing four hundred & Seven acres 1/2 & allowance  
 Surveyed for John Lockart the 17<sup>th</sup> Day of June 1793. in pur-  
 suance of a Warrant dated 3<sup>d</sup> Day of Jany. 1793.

Daniel Brodhead Esqr. } by W<sup>m</sup> Gray D.S.  
 Surv<sup>r</sup> Genl }

IN TESTIMONY that the above is a copy of the original remaining on file in  
 the Department of Internal Affairs of Pennsylvania, made  
 conformably to an Act of Assembly approved the 16th day of  
 February, 1833, I have hereunto set my Hand and caused  
 the Seal of said Department to be affixed at Harrisburg,  
 this seventh day of September 1905.

*Loose A. Brown*  
 Secretary of Internal Affairs.